

Photron FASTCAM Analysis

 Installation Manual

Ver. 1.6.0E

Photron

- The copyright of this manual is held by PHOTRON LIMITED.
- Product specifications and manual contents are subject to change without notice.
- PHOTRON LIMITED bears no responsibility for any results by using our products nor by applying this manual to any operations.
- The official name of Windows is the Microsoft® Windows® Operating System.
- Microsoft®, Windows®, Windows® 7, Windows® 8.1, Windows® 10 and Windows Server® are registered trademarks or trademarks in the United States and other countries of Microsoft Corporation of the United States.
- Other company names and product names listed in this manual are trademarks of their respective companies.
- Product specifications and features can change for the purpose of improvement without notification.

Introduction

Thank you for using Photron FASTCAM Analysis (PFA).

This manual contains the operating instructions and warnings necessary for installing PFA.

Please read the entire manual before using the software.

Please note that the actual screen may differ from the screen shown in the manual depending on the version of software you are using.

If any part of this manual is unclear, contact Photron using the contact information printed at the back of this manual.

Supported PFA version: Ver. 1.6.0

Manual Notation

The following icons and symbols are used in the explanations in this manual.



Icon/Symbol	Description
	This symbol indicates instructions that should always be followed when using the software, or things to be careful of when using the software.
	This symbol indicates a space for you to use for making notes.
“ ”	This symbol is used to indicate the names of items on a screen, references, dialog names, and keyboard keys.
[]	This symbol is used to indicate screen names, button names, and menu names.
< >	This symbol is used to explain operating procedures in diagrams and supplementary items.

Table of Contents

Chapter.1. PFA Overview	1
1.1. PFA Overview	2
1.2. Operating Environment of PFA.....	2
Chapter.2. Installing PFA Trial Version	3
2.1. Installing PFA Trial Version	4
2.2. Installing PFA Trial Version “not via PFV installer”	8
2.3. About PFA Trial Version	11
Chapter.3. Installing PFA Licensed Version	12
3.1. Installing PFA Licensed Version	13
3.2. About PFA.....	16
Chapter.4. Using PFA	18
4.1. Launching PFA	19
4.2. Starting PFA by Shortcut	21
Chapter.5. Contacting Photron	24
5.1. Contacting Photron	25

Chapter.1. PFA Overview

1.1.PFA Overview

PFA was designed to be used as an assistant function for Photron FASTCAM Viewer (hereafter referred to as PFV), the camera control software for FASTCAM cameras.

With PFA, it is possible to analyze motion within an image sequence imported from PFV in order to obtain values for displacement, velocity and acceleration. Following analysis it is possible to achieve synchronized playback of the data graphs and images.

1.2.Operating Environment of PFA

PFA software can be run with the following OS and PFV environments.

- OS
 - Windows 8.1 (64/32bit version)
 - Windows 10 (64/32bit version)
 - Windows 11 (64bit version)
- PFV
 - Version 3.3.9 (64/32bit version) or later



Caution

- Monochrome CIHX and AVI (8bit/uncompressed) files recorded with PFV4 cannot be read by PFA (Ver. 1.4.4.0 / 1.3.4.0) in a Windows 7 environment.
- To read monochrome CIHX and AVI (8bit/uncompressed) files, use Windows 8.1 or later OS.

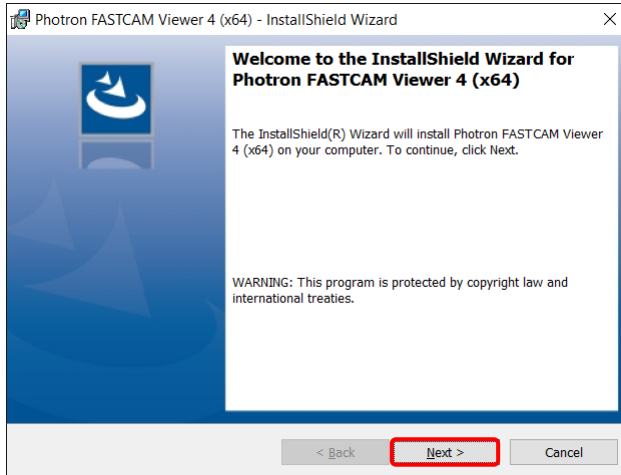
Chapter.2. Installing PFA Trial Version

2.1. Installing PFA Trial Version

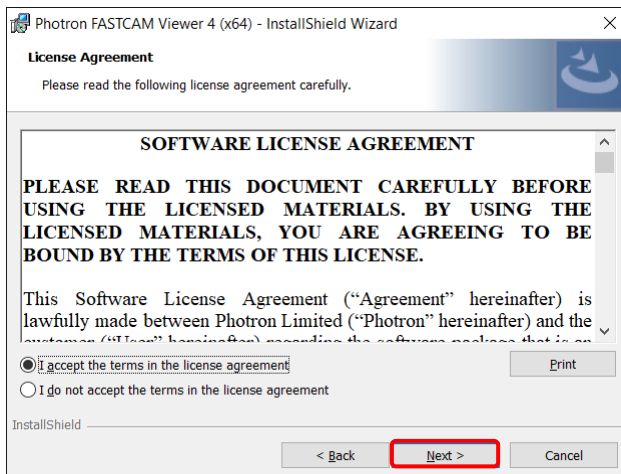
Install PFA using the following procedure.

1. Insert the PFV software installation disk. (If you downloaded the file, extract the zip file.)
2. On the optical disk drive, open the "PFV Setup32" folder or "PFV Setup64" folder, and then double click the file "setup.exe".

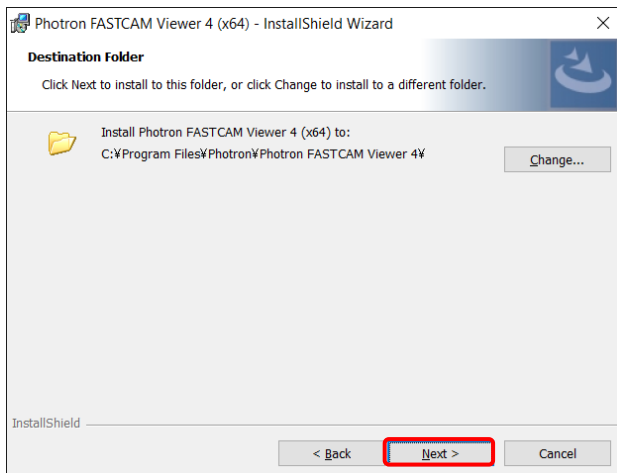
The PFV setup program starts, and then the following dialog box will appear. Click [Next].



3. The user license agreement appears. Confirm the contents, and then click [Yes].



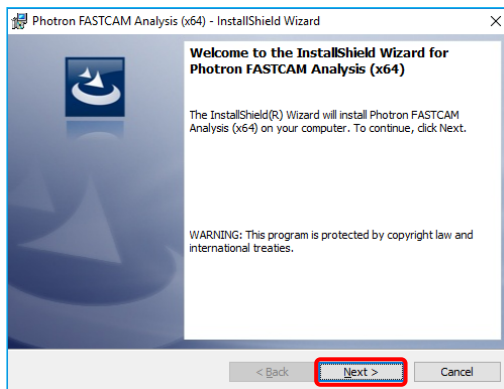
- Specify the installation location.
If necessary, click [Browse] and specify another location.
Click [Next].



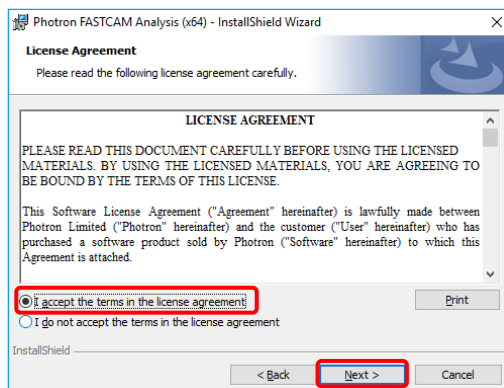
- Installation starts.
When installation is finished, the following screen appears.
In order to automatically launch the installation of PFA, enable the check box of [I want to launch Photron FASTCAM Analysis setup] then click [Finish].



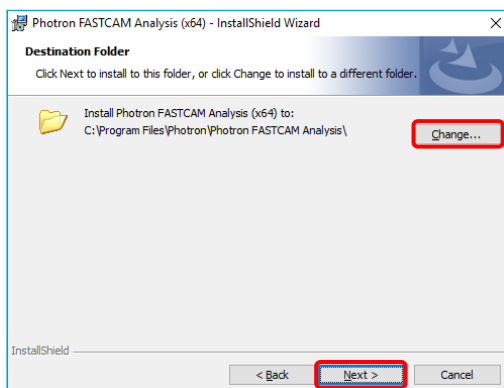
6. PFV setup program is finished and PFA setup programs starts. Then click [Next].



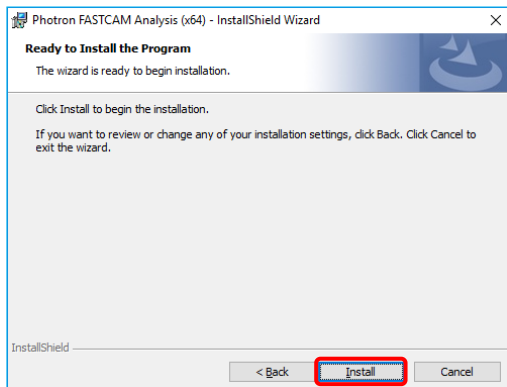
7. The user license agreement appears. Confirm the contents. And if you accept the terms in the license agreement, enable the check box of [I accept the terms in the license agreement] then click [Yes].



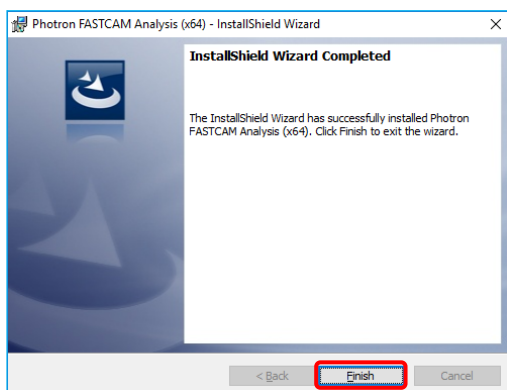
8. Specify the installation location. If necessary, click [Change] and specify another location. Click [Next]



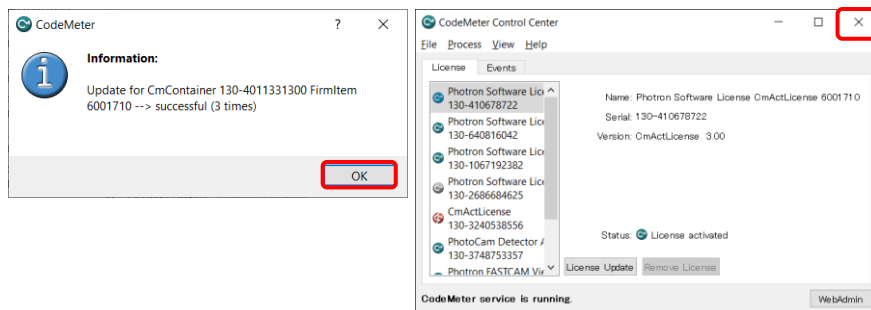
9. Installation procedure is ready. Then, click [Install]



10. Installation starts.
When the installation has finished, the following screen will appear.
Click [Finish].



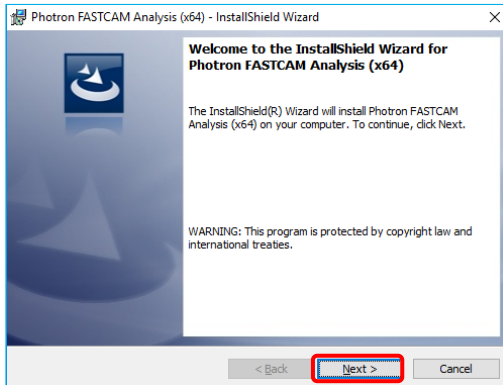
11. A license-related message will appear. Click the [OK] button, then the [X] button in the upper right corner to close.



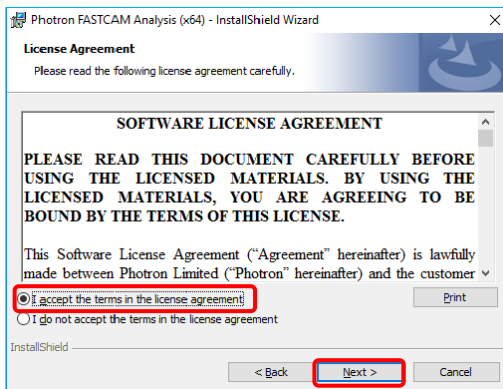
2.2.Installing PFA Trial Version “not via PFV installer”

Install PFA using the following procedure.

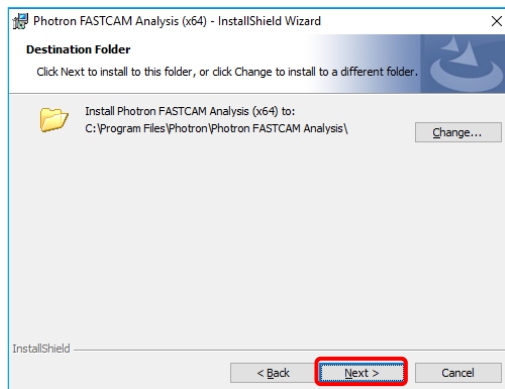
1. Insert the PFV software installation disk. (If you downloaded the file, extract the zip file.)
2. On the optical disk drive, open the "PFA\Setup32_trial" or "PFA\Setup64_trial" folder, and then double click the file "Setup.exe".
The PFA setup program starts, and then the following dialog box will appear. Click [Next].



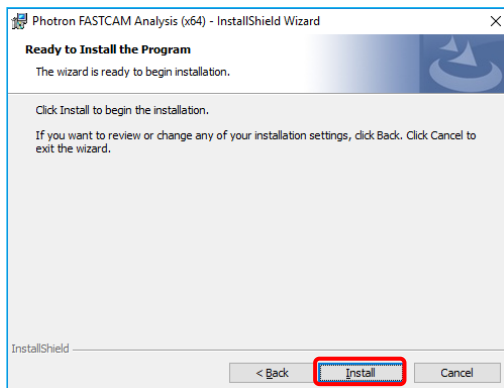
3. The user license agreement appears. Confirm the contents. And if you accept the terms in the license agreement, enable the check box of [I accept the terms in the license agreement] then click [Next].



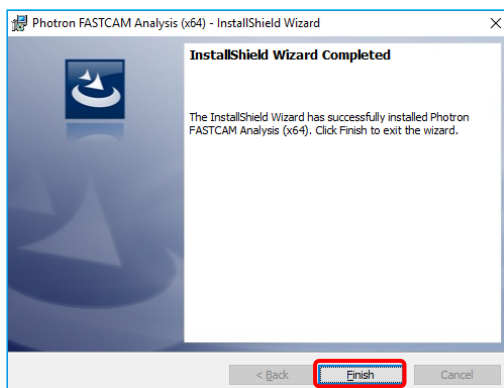
- Specify the installation location.
If necessary, click [Change] and specify another location. Click [Next]



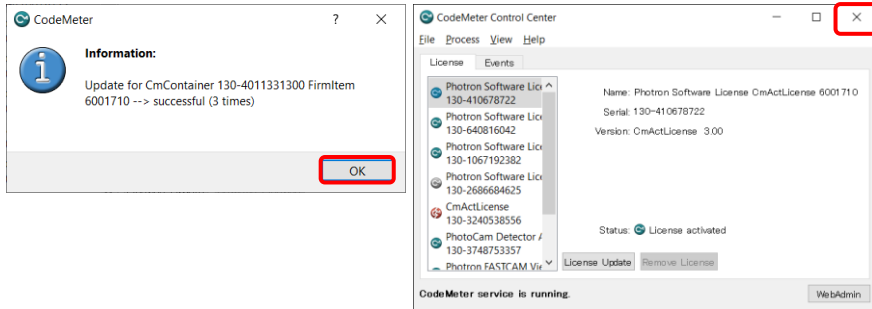
- Installation procedure is ready. Then, click [Install]



- Installation starts.
When the installation has finished, the following screen will appear.
Click [Finish].



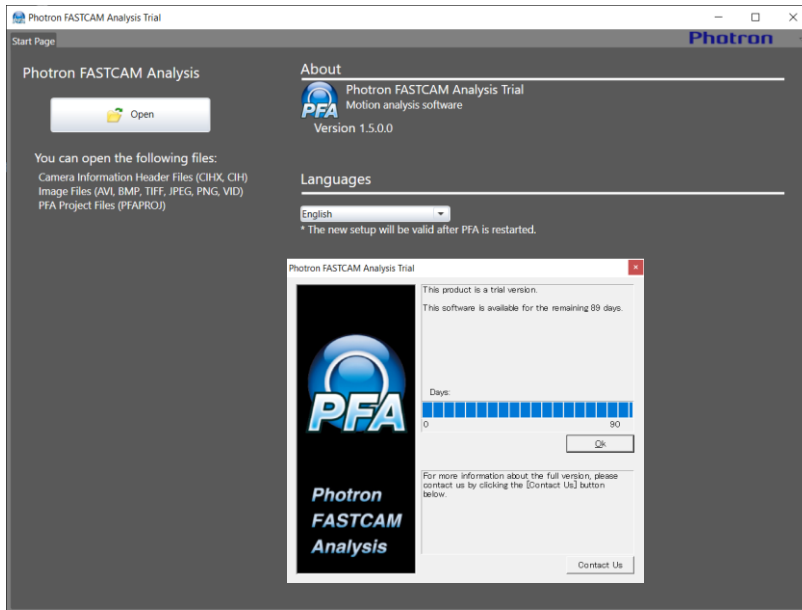
7. A license-related message will appear. Click the [OK] button, then the [X] button in the upper right corner to close.



2.3.About PFA Trial Version

This is the startup screen after installing the PFA trial version.

You can try the software for 90 days from the first startup. After confirming the expiration date of use, click the [OK] button to close the program. The trial version has no functional limitations.



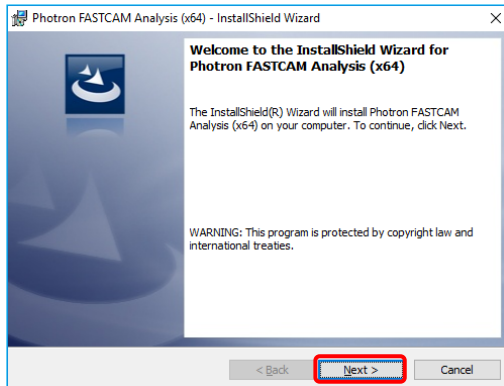
Chapter.3. Installing PFA Licensed Version

3.1. Installing PFA Licensed Version

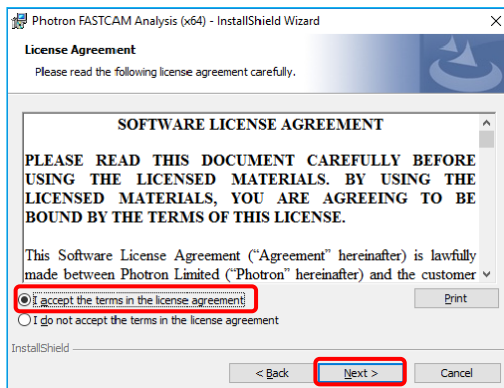
Install PFA using the following procedure.

1. Insert the PFV software installation disk. (If you downloaded the file, extract the zip file.)
2. On the optical disk drive, open the "PFA\Setup32 " or "PFA\Setup64 " folder, and then double click the file "Setup.exe".

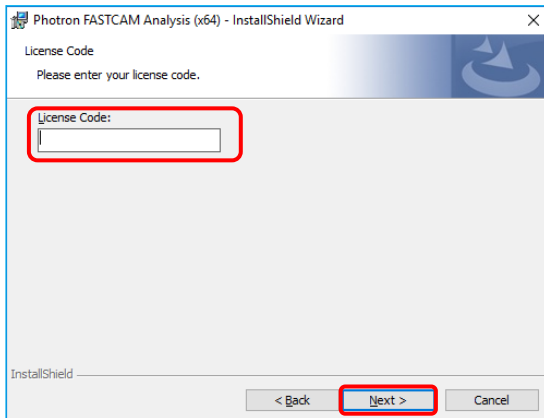
The PFA setup program starts, and then the following dialog box will appear. Click [Next].



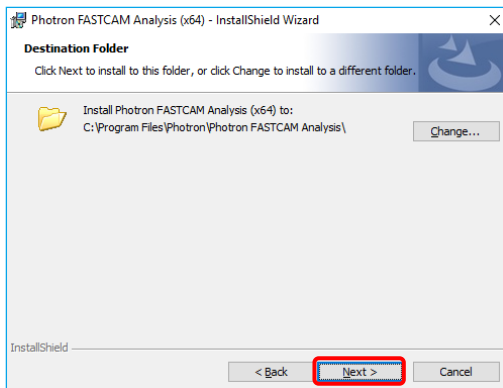
3. The user license agreement appears. Confirm the contents. And if you accept the terms in the license agreement, enable the check box of [I accept the terms in the license agreement] then click [Next].



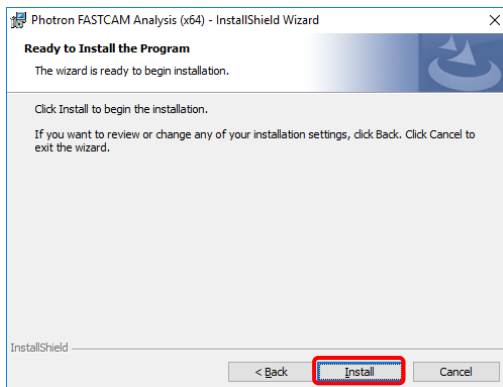
- The license code input screen appears.
Enter the license code of the product you purchased and click the [Next] button.



- Specify the installation location.
If necessary, click [Change] and specify another location. Click [Next]

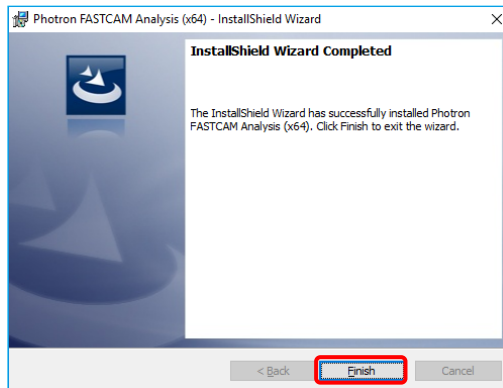


- Installation procedure is ready. Then, click [Install]



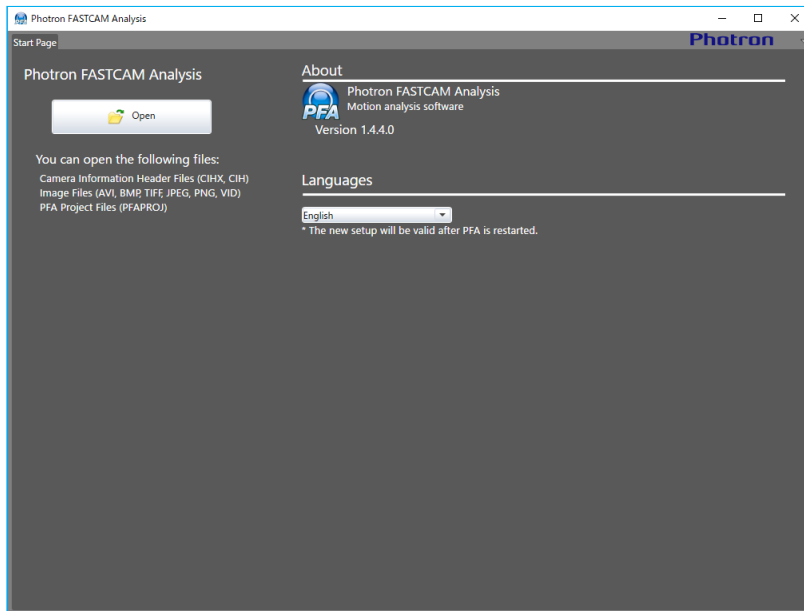
7. Installation starts.

When the installation has finished, the following screen will appear.
Click [Finish].



3.2.About PFA

This is the startup screen after installing the PFA.



Not like the trial version, this screen does not have the "License" description.

! Caution

- PFA can be installed to 1 PC per 1 purchase
- When to change the PC to use, first uninstall the PFA installed to the old PC, and then reinstall PFA to the new PC.



Chapter.4. Using PFA

4.1.Launching PFA

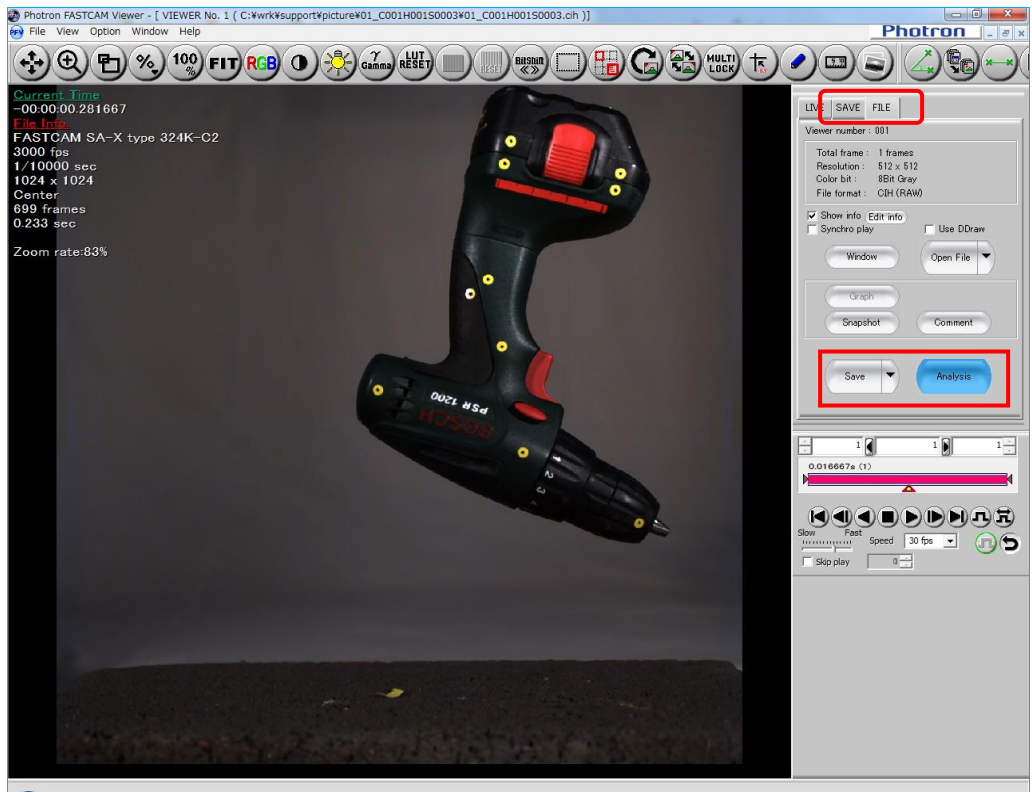
Caution

- The PFA trial version cannot be started from PFV3. Please start it from the Start button or shortcut.

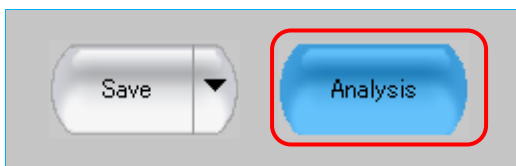
1. Go from [Start] to [All programs] to [Photron FASTCAM Viewer 3] - "PFV Ver.3".

Or double-click  on the desktop.

2. PFV starts. Before launching PFA, you need to either use an installed camera to record some images into memory or open some existing images located on the computer using the [File View] function.

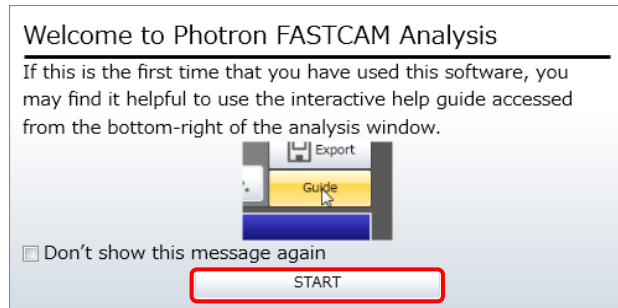


3. Launch PFA from [Analysis] button.

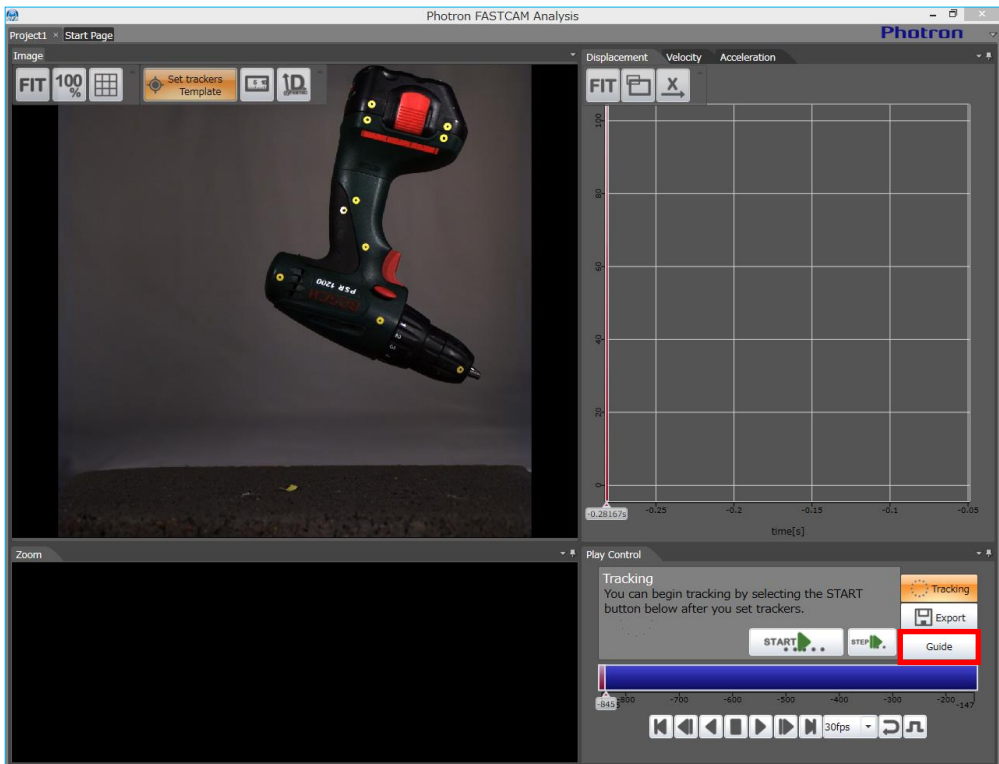


4. Launch PFA.


Once PFA has launched for the first time a welcome screen will be displayed to inform you about the interactive help guide, select START to continue to the software.

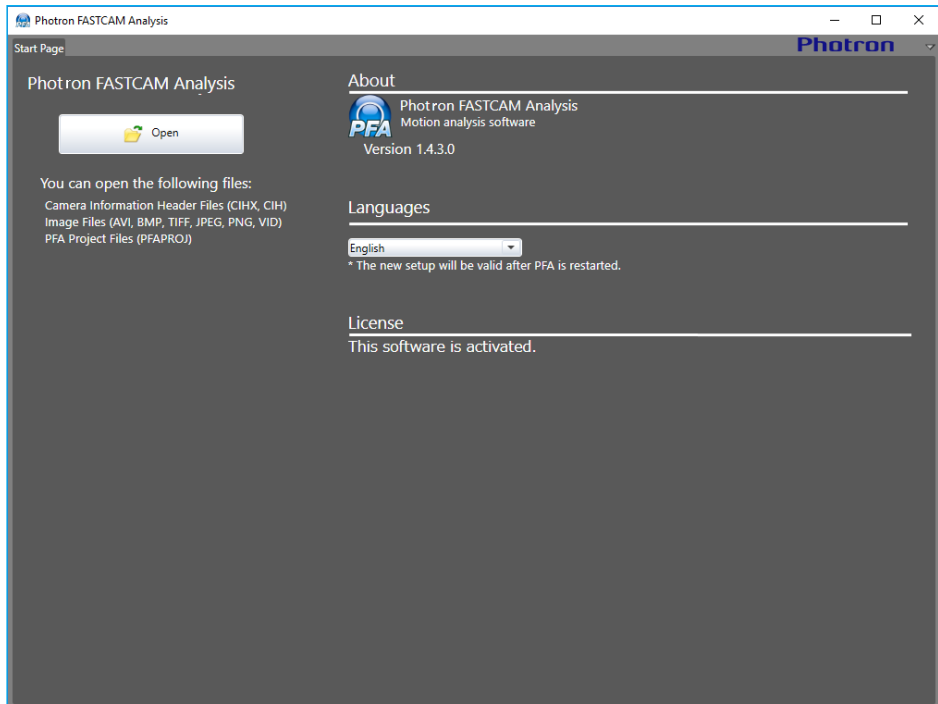


PFA has a powerful interactive help guide with step-by-step instruction on how to carry out an analysis. If this is the first time that you are using this software we recommend that you use this guide – select “Step by Step Guide Function” to begin.



4.2. Starting PFA by Shortcut

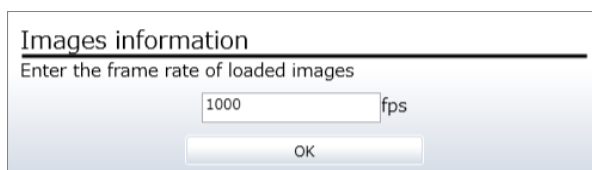
1. Go from [Start] to [All programs] to [Photron FASTCAM Analysis].
Or, double-click  on the desktop.
2. PFA starts. The below window comes up immediately.



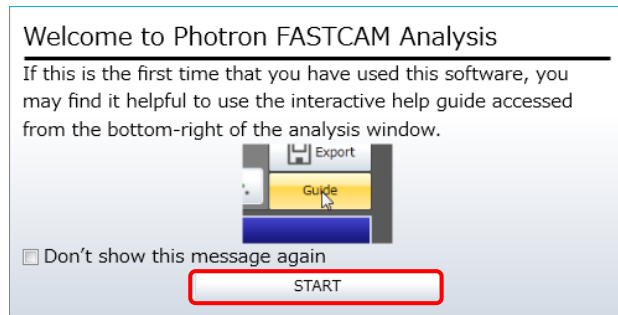
3. Read the target image that you wish to analyze. Locate the image file and click [Open] to read the image data in.

Image files that PFA can read in are the camera information header (CIHX, CIH) file, image data files (AVI, BMP, TIFF, PNG and VID) and the PFA project file (PFAPROJ).

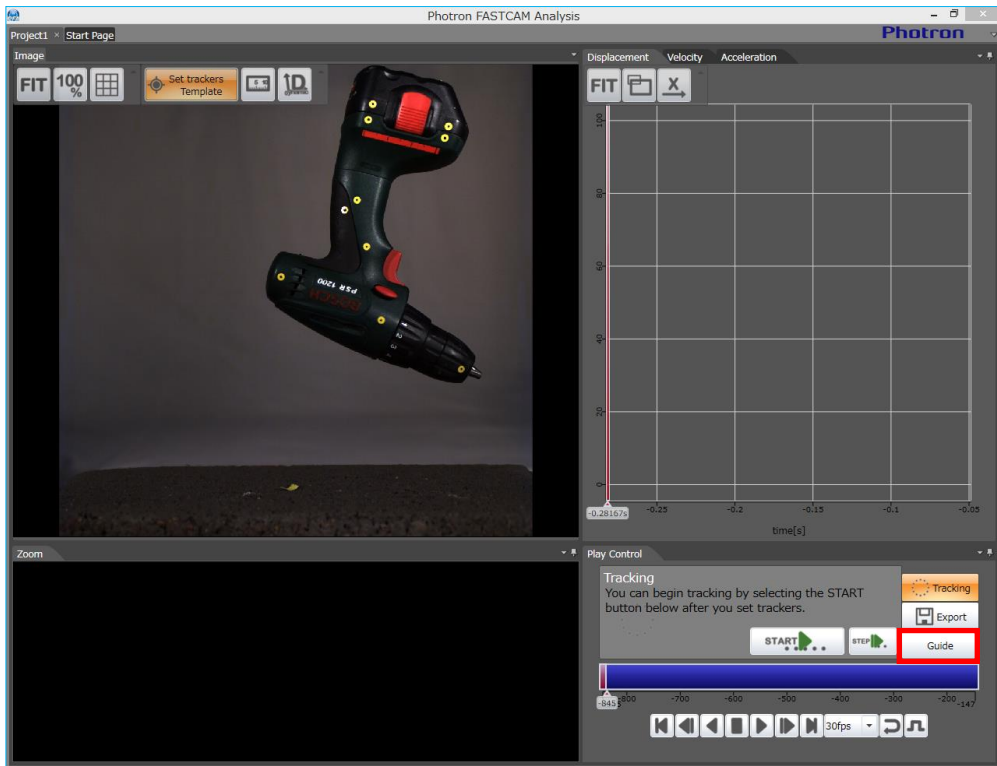
As soon as an image data file has been read in, the below window is displayed. Enter the frame rate at which the movie image was shot, and click [OK].



- Once PFA has launched for the first time a welcome screen will be displayed to inform you about the interactive help guide, select START to continue to the software.



PFA has a powerful interactive help guide with step-by-step instruction on how to carry out an analysis. If this is the first time that you are using this software we recommend that you use this guide – select “Step by Step Guide Function” to begin.





Chapter.5. Contacting Photron

5.1. Contacting Photron

For inquiries related to PFV and PFA software, contact Photron at the contact information listed below.

Additionally, the following items will be verified when inquiring, so please prepare them in advance.

Items Verified	Concrete Example
Contact Information	Company, school or organization name, customer contact name, contact phone number, contact e-mail.
Product Name	The Photron FASTCAM Analysis version number. The Photron FASTCAM Viewer version number. For the version number, check the version information.
Condition of the system and what is known about it.	

Contact Information	
In Americas and Antipodes	PHOTRON USA, INC. 9520 Padgett Street, Suite 110, San Diego, CA 92126-4426, USA Phone: +1 (800) 585 2129 or +1 (858) 684 3555 Fax: +1 (858) 684 3558 E-mail: image@photron.com Web: www.photron.com
In UK, Africa and India	PHOTRON (EUROPE) LIMITED The Barn, Bottom Road, West Wycombe, Buckinghamshire HP14 4BS, U.K. Phone: +44 (0) 1494 48 1011 Fax: +44 (0) 1494 48 7011 E-mail: image@photron.com Web: www.photron.com
In Europe outside the UK	Photron Deutschland GmbH Ziegelweg 3, 72764 Reutlingen, Germany Phone: +49 (0) 7121 699 7950 Fax: +49 (0) 7121 699 7943 E-mail: image@photron.com Web: www.photron.com
In China	PHOTRON (SHANGHAI) LIMITED Room 1601, No. 1, Lane 600, Tianshan Road, Changning District, Shanghai (TONGDA PROPERTY BUILDING) 200051 China Phone: +86 (21) 5268 3700 Fax: +86 (21) 5268 3702 E-mail: info@photron.cn.com Web: www.photron.cn.com
In other areas	PHOTRON LIMITED 21F, Jinbocho Mitsui Bldg., 1-105 Kanda Jimbocho, Chiyoda-Ku, Tokyo 101-0051, Japan Phone: +81 (3) 3518 6271 Fax: +81 (3) 3518 6279 E-mail: image@photron.co.jp Web: www.photron.co.jp

Photron FASTCAM Analysis

Installation Manual Ver. 1.6.0 E

Publication Date March 2025
Publisher PHOTRON LIMITED
21F, Jinbocho Mitsui Bldg.,
1-105 Kanda Jimbocho, Chiyoda-Ku, Tokyo 101-0051, Japan