



- Continuous light
- White, Blue, 660 nm red
- Changeable lens
- Long lifetime (50.000 h+)
- Small size
- Low heat radiation
- Less power consumption

WE BUILD THINGS THAT WORK THE WAY YOU WISH THEY WOULD.

MultiLed products cover all applications of high speed cameras and many applications in the machine vision market. Some family members e.g. cover sub microsecond exposure time, monochromatic light or give you enough light to fully close aperture at some microseconds exposure time. Designed from a decade of experience with thousands of customer projects in mind, MultiLed products offer ultra strong lighting at an affordable price.

white

455 nm

660 nm

MULTILED LT MAX v15 - KEY FEATURES

- 24 high power LED, 240 Watt, 24 Volt (24,000 Lumen total)
- Robust and highly available XLR jack
- Fan inside
- Environmental protection: as IP20
- Bottom 1/4" standard thread for photographic accessories and mount
- Dimensions: 146*106*84 mm
- Preinstalled lens (horizontal x vertical): 12°x12°
- Additional lenses (horizontal x vertical): 25°x25° - 40°x40° - 60°x60° - 30°x13° - 60°x12°
- Power supply and 6m XLR cable included.
- Option: longer cables or other cable types on request.

Scope of delivery:

- LT MAX: Lamp head, desktop power supply, 6m cable, 12°x12° lens
- LT MAX+: As LT MAX, additional lenses: (horizontal x vertical): 25°x25° - 40°x40° - 60°x60° - 30°x13° - 60°x12°

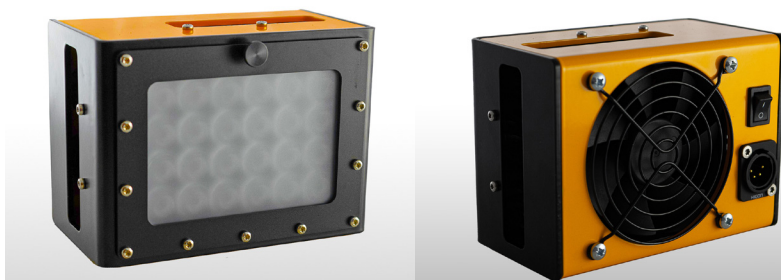
ALTERNATIVE LED TYPES (STANDARD: COLD WHITE 24.000 lm)

Color	Peak wavelength nm	Luminous flux lm	Radiant flux mW
Blue	440 - 460	-	80.000
Photo Red	640 - 670	-	63.900

For other colors and near infrared please see LT datasheet.
For a more narrow wavelength selection, please contact us.



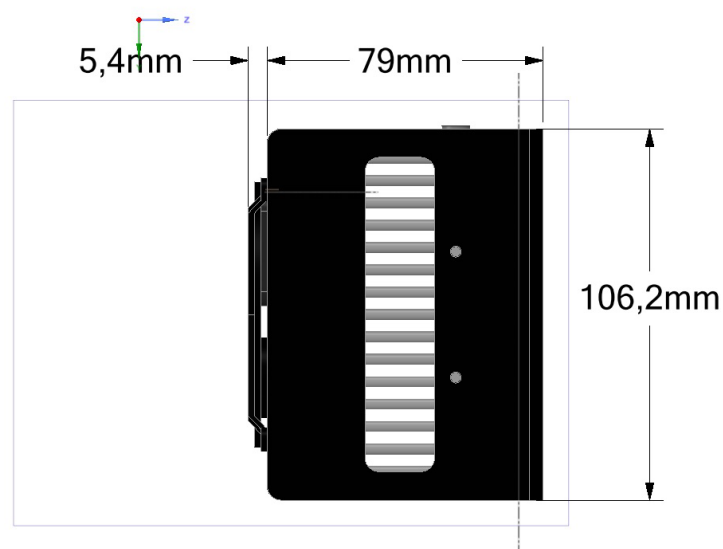
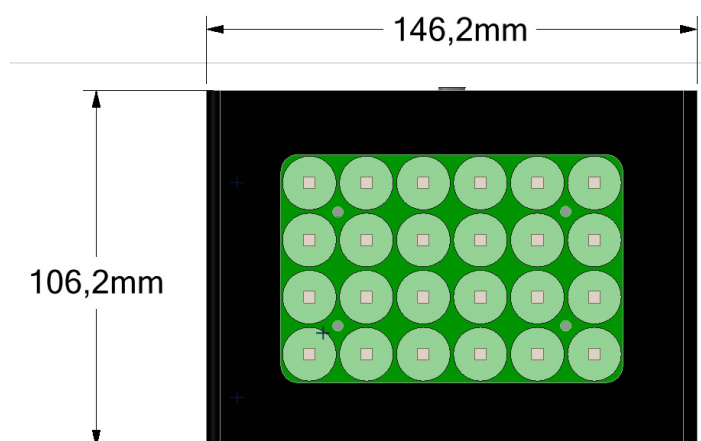
gsvitec.com



MultiLED LT MAX

MULTILED LT MAX

Emitter	24 high power LED
Power consumption	240W
Supply voltage	24 Vdc
Bundled power supply	Standard desktop PS 24 V 240 W
Luminous flux	White, 24.000 lumen
Power connector	XLR 4 Pin
Heat dissipation	Heat sink w. temperature controlled fan
Environmental temp. (operation)	-25° - 40° C
Environmental temp. (storage)	-25° - 80° C
Overheat protection	Thermo switch 80°C (fuse 80°C before 1-oct-2011). Thermo switch turns off power at 80°C and turns on when temperature falls < 60°C.
Environmental protection	As IP 20
Mounting options	Bottom 1/4" standard thread
Standard lenses	12° FWHM
Alternative lenses	12° Spot, medium, wide, extra wide, 120°
Dimensions	146x106x84 mm
Weight	1100 g



TECHIMAGING

REQUEST A DEMO
PRICING AND AVAILABILITY
imaging@techimaging.com

WWW.TECHIMAGING.COM +1(978)-740-0063

All specifications without guarantee, errors and omissions expected, subject to changes