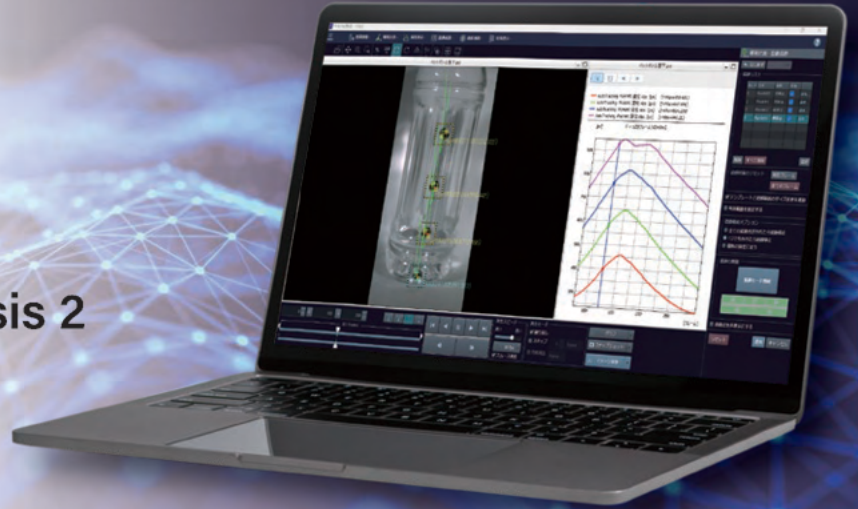


# PHOTRON FASTCAM ANALYSIS 2



# PFA2

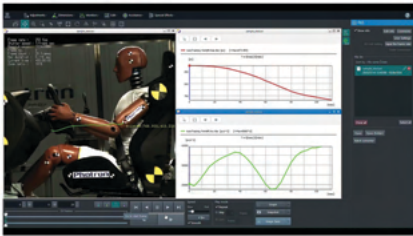
## Photron FASTCAM Analysis 2



## Easy-to-Use Video Analysis Software

Photron FASTCAM Analysis (PFA2) is a powerful tool for measuring displacement, acceleration, and velocity from video footage. It automatically tracks markers and feature points using advanced pattern matching, making motion analysis accessible to users of all experience levels.

### Product Features



#### From Observation to Quantification

The simple and intuitive interface, familiar to existing Photron camera users, ensures quick calculation and presentation of displacement, velocity and acceleration over time in just a few clicks of the mouse.



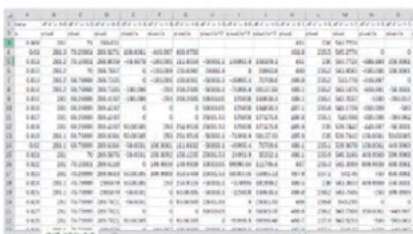
#### User-Friendly Operation

Choose your measurement points and select the tracking algorithm, enter a known length to calibrate the image scale and define the coordinate system. Once these simple steps are complete, select the "Start Tracking Mode" button to complete the process and points are automatically tracked.



#### Display Tracking Results

Once analysis is complete, open the graphing tools and identify which point parameters you wish to display. Multiple graphs may be opened and all are dynamically linked to the original image sequence. Captured external sensor data may also be imported for display where there is a common time reference.



#### Output Formats for Analysis Results

Using 'Layout Save', tracked image sequences and generated graphs may be combined and saved as a standard video file (e.g. .AVI, .MP4 or .MOV) for archive, report and presentation purposes.

Raw data may be exported in a CSV file format for further detailed analysis and processing.

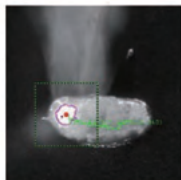
## Analysis examples using PFA2



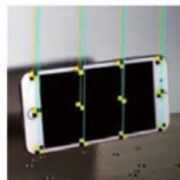
Machine Behavior



Manufacturing Equipment Behavior



Welding



Drop Test



Crash Test



Sports Motion

## General Specifications

### Import File Formats (Images)

Native Photron High-Speed Camera Formats:  
.cih, .cihx incl. .mraw, .graw

Video formats: .avi, .wmv, .mp4, .mov

Still Image Series: .bmp, .tif, .jpg, .png

### Supported File Formats (Data)

Waveform: .csv  
PFA2: .tsi (data and images)

### Display Settings

Calibration Scale, Scale Grid, Coordinate System

### Coordinate System

Coordinate System

### Number of Tracking Points

30

### Tracking Methods

Correlation Tracking (Template tracking)  
COB (Centre of Brightness Tracking)  
TLD (Tracking Learning Detection – adaptive)

### Other measurements

Brightness Area Ratio (Not tracked)  
Distance Between Two Points  
Distance Between Multiple Points

### Tracking Control

Automatic and Manual Advance, Reverse Direction

### Sub Pixel Resolution

Yes

### Define Valid Tracking Area

Yes

### Analysis Metrics

Displacement (X, Y, ABS)  
Velocity (X, Y, ABS)  
Acceleration (X, Y, ABS)  
Frequency (FFT)  
Brightness (Area, Perimeter Length)  
Feret Diameter (Horizontal, Vertical)  
Distance (ABS Displacement, ABS Velocity, ABS Acceleration)

### Graph Types

XT, Composite, FFT

### Export File Formats

\*Video: .avi, .mp4, .mov  
\*Still Image Series: .bmp, .tif, .jpg, .png  
\*Including Layout (combine images and graph)  
Data: .csv

### Image Pre-Processing

LUT (Gain, Gamma, Contrast, Brightness)  
Filters (Median, Gaussian, Edge Enhancement, Sobel, Spot Noise)

### Image Correction

Lens Calibration  
Keystone Correction

### License Type

Trial Licence – 30 Days  
Perpetual License

### License Method

Hardware USB Dongle\* (excl. Trial Licence).  
\*May be combined with other Photron software options – incl. DAQ, PFV Mobile, MCAT

## System Requirements

### Operating System

Windows 11 Pro  
Windows 11 Enterprise  
Windows 11 Education  
\*64 version required

### Processor

Intel Core i5 or higher  
(Intel Core i7 or higher recommended)  
\*SSE2 required

### RAM

8GB or more (16GB or more recommended)

### Hard Disk or SSD

2 GB or more free space (for installation)

### Graphics Card

Intel HD Graphics\* or higher (NVIDIA graphics card with 4GB or more VRAM recommended) OpenGL 3.0 or higher required  
\*AMD graphics cards are not supported

### Display Resolution

Full HD (1920 x 1080) 24-bit color or higher is recommended.  
WXGA (1280 x 768) can also be used, but some items may not be displayed

### Others

A large capacity hard disk or removable media device for data storage

# DOWNLOAD THE TRIAL VERSION NOW!

You can download a trial version of Photron FASTCAM Analysis 2 (PFA2) (30-day trial period)

[CLICK TO DOWNLOAD HERE](#)

# TECHIMAGING

**REQUEST A DEMO  
PRICING AND AVAILABILITY  
[imaging@techimaging.com](mailto:imaging@techimaging.com)**

**WWW.TECHIMAGING.COM +1(978)-740-0063**