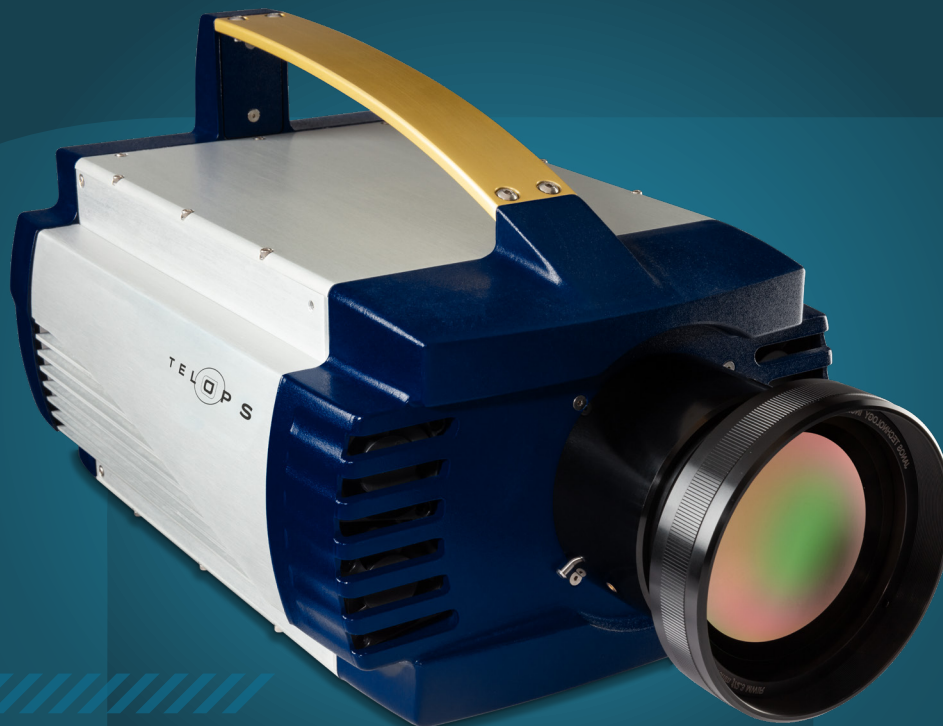


MULTISPECTRAL INFRARED CAMERAS

# MS-IR FAMILY



THE MS-IR

## KEY FEATURES



**MULTISPECTRAL CAPABILITIES**



**HIGH DYNAMIC RANGE**



**ADVANCED CALIBRATION**

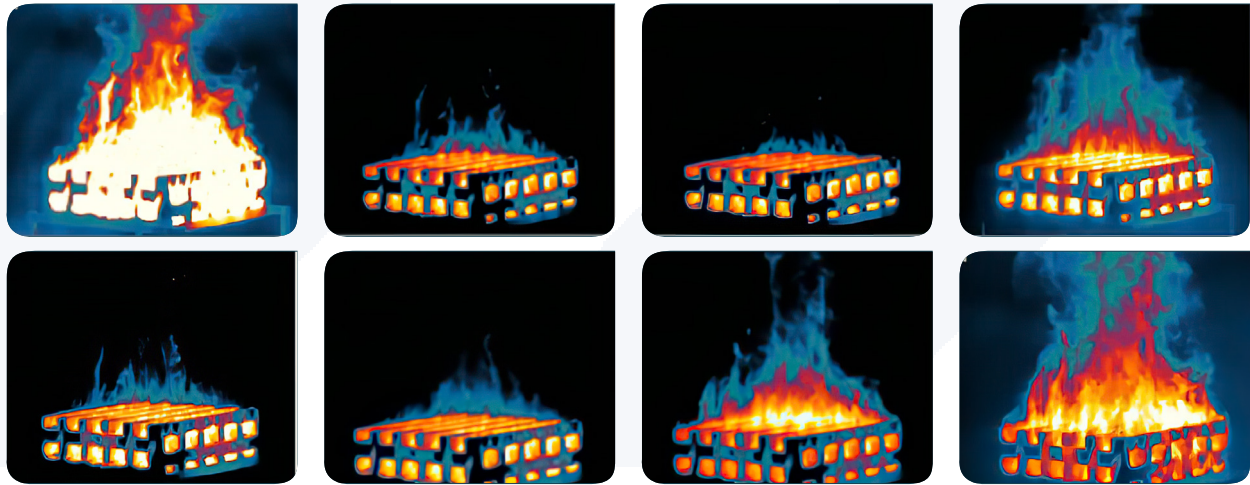


**HIGH SENSITIVITY**

The MS-IR infrared camera allows the scene to be split into eight different spectral bands rather than only one broadband image, thus enabling spectral signature analysis. The filter wheel is a fast-rotating mechanism designed to maximize the cameras' frame rate. Rotating speed is adjustable up to 105 Hz per filter, allowing a frame rate up to 2 900 fps in a synchronised mode.



## EXAMPLES OF TYPICAL USES



Multispectral analysis of combustion experiment

## VERY LONGWAVE SERIES

SPECIFICATIONS	MS V1K	MS V350
Detector Type	Cooled SLS	Cooled SLS
Detector Format	640 × 512 pixels	320 × 256 pixels
Spectral Range	7.5 –11. 5 μm	7.7 – 11.5 μm (other ranges available)
Detector Pitch	25 μm	30 μm
Optical Aperture	F/2.5	F/2
Max. Frame Rate in Full Window (Static Filter Wheel Mode)	1 012 Hz	340 Hz
Max. Frame Rate in Subwindow (Static Filter Wheel Mode)	40 000 Hz @ 64 x 8	14 000 Hz @ 128 x 8
Max. Frame Rate in Rotating Filter Wheel Mode	800 Hz	340 Hz
Minimum Exposure Time	0.3 μs	5.1 μs
Typical NETD	30 mK	25 mK
Lens Mount	Threaded	Threaded

## MIDWAVE SERIES

SPECIFICATIONS	MS M3k	MS M2k UD	MS M2k	MS M1k
Detector Type	Cooled InSb	Cooled InSb	Cooled InSb	Cooled InSb
Detector Format	320 x 256 pixels	640 × 512 pixels	320 x 256 pixels	640 × 512 pixels
Spectral Range	1.5 μm to 5.5 μm	1.5 μm to 5 μm	1.5 μm to 5.5 μm	1.5 μm to 5 μm
Detector Pitch	30 μm	25 μm	30 μm	25 μm
Optical Aperture	F/2.5	F/2.5	F/2.5	F/2.5
Max. Frame Rate in Full Window (Static Filter Wheel Mode)	3 100 Hz	1 500 Hz	1 900 Hz	1 012 Hz
Max. Frame Rate in Subwindow (Static Filter Wheel Mode)	100 000 @ 64 x 4	42 000 Hz @ 64 x 8	90 000 Hz @ 64 x 4	40 000 Hz @ 64 x 8
Max. Frame Rate in Rotating Filter Wheel Mode	800 Hz	800 Hz	800 Hz	800 Hz
Minimum Exposure Time	1 μs	0.5 μs	1 μs	0.3 μs
Typical NETD	30 mK	≤ 23 mK	30 mK	25 mK
Lens Mount	Bayonet	Threaded	Bayonet	Threaded

## MIDWAVE HD SERIES

SPECIFICATIONS	MS M350	MS M10hd
Detector Type	Cooled InSb	Cooled InSb
Detector Format	640 × 512 pixels	1280 × 1024 pixels
Spectral Range	1.5 – 5.4 μm	1.5 – 5.4 μm
Detector Pitch	15 μm	15 μm
Optical Aperture	F/3	F/3
Max. Frame Rate in Full Window (Static Filter Wheel Mode)	350 Hz	105 Hz
Max. Frame Rate in Subwindow (Static Filter Wheel Mode)	4 980 Hz @ 132 x 4	2 900 Hz @ 132 x 8
Max. Frame Rate in Rotating Filter Wheel Mode	350 Hz	800 Hz
Minimum Exposure Time	0.5 μs	1 μs
Typical NETD	20 mK	25 mK
Lens Mount	Bayonet	Bayonet

## ABOUT US

Telops, part of Exosens, is a leading supplier of high-performance scientific infrared cameras for the defense, academic, industrial, and environmental research industries. Telops also offers R&D services for optical systems technology development.

Since its founding in 2000, Telops has distinguished itself through its highly skilled personnel and innovative approach to the technological challenges in optics and photonics.

Today, its experts and cutting-edge infrared cameras and hyperspectral imagers are internationally recognized.



## FEATURES & OPTIONS

### OUR INFRARED CAMERAS: KEY FEATURES & SPECIFICATIONS

All of our MS-IR infrared cameras offer a common set of advanced features to address the most demanding research applications. They include:

- Closed-cycle rotary Stirling sensor cooling
- Blackbody-free permanent calibration (up to 150 C)
- Calibration up to 2500 C (optional)
- Fast-rotating 8-position filter wheel (6000 rpm)
- High speed data transfer capabilities:
  - Internal memory buffer up to 32 GB
  - Gig-E
  - Camera Link
- Trig-In/Trig-Out
- SDI, GPS, IRIG-B, RS232, and thermistor ports
- Automatic Exposure Control (AEC)
- Enhanced Dynamic Range Imaging (EHDMI)
- 16 bits dynamic range
- Size w/o lens: 13.8" x 8.5" x 9.3" (352 x 216 x 236 mm)

### OUR INFRARED CAMERAS' LENS OPTIONS

Telops offers a variety of lens options depending on your camera configurations using either a threaded or bayonet mount interface.

# TECHIMAGING

[WWW.TECHIMAGING.COM](http://WWW.TECHIMAGING.COM)

**REQUEST A DEMO  
PRICING AND AVAILABILITY  
[imaging@techimaging.com](mailto:imaging@techimaging.com)**

© Telops. The information furnished is believed to be accurate and reliable, but is not guaranteed and is subject to change without notice. No liability is assumed by Telops group of companies nor by any Exosens Group companies. Performance data represents typical characteristics as individual product performance may vary. Customers should verify that they have the most current product information from the Telops group of companies before placing orders. Texts and pictures may not be considered as contractually binding. This document may not be reproduced, in whole or in part, without the prior written consent of Telops.