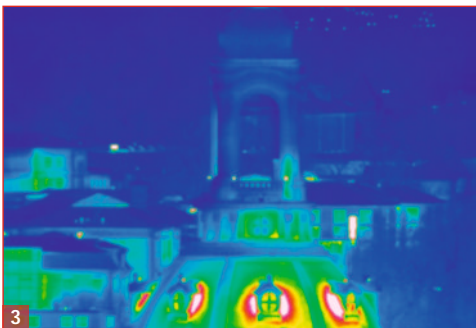
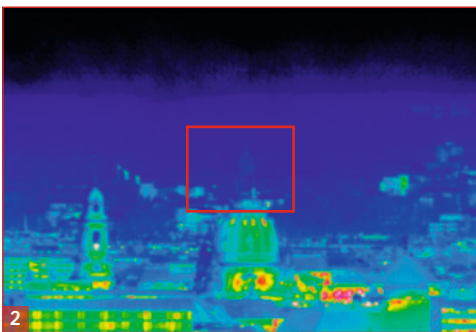
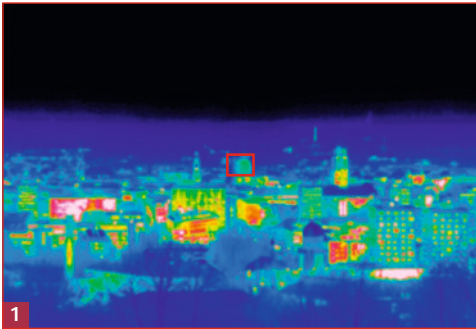


ImageIR® 8300 / 9300 Z

Thermal Imaging Systems

INFRAtec.

Europe's leading specialist for infrared sensors and measurement technology



Church of Our Lady in Dresden, lens focal length (28 ... 850) mm

Cooled detectors with up to (1,280 × 1,024) IR pixels

Spectral range (3.6 ... 4.9) μm

30× infrared zoom lens

Detection range of 15 km for persons

Detection range of 18 km for vehicles



www.InfraTec.eu

www.InfraTec-infrared.com

Made in Germany



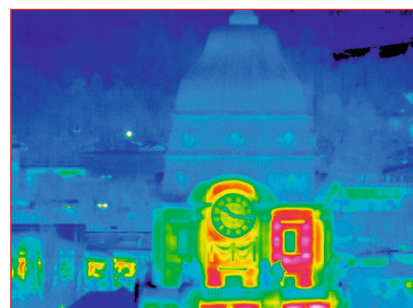
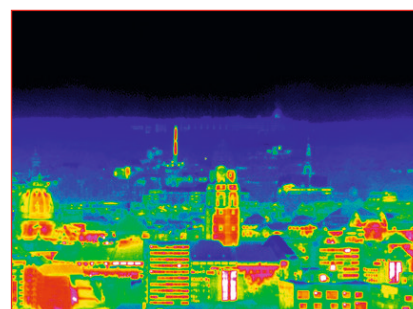
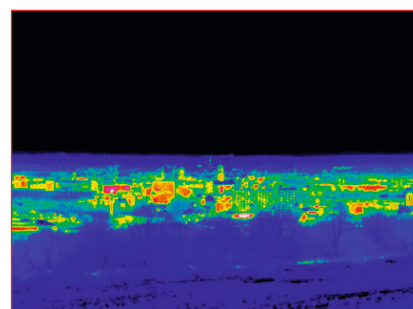
Latest information on the internet.

Spectral range	(3.6 ... 4.9) μm
Pitch	15 μm
Detector	InSb
Detector format (IR pixels)	ImageIR® 8300 Z: (640 × 512) ImageIR® 9300 Z: (1,280 × 1,024)
Image acquisition	Snapshot
Readout mode	ITR / IWR
Aperture ratio	f/5.5
Detector cooling	Stirling cooler
Temperature measuring range	(-10 ... 200) °C, up to 500 °C*
Temperature resolution @ 30 °C	0.02 K
Frame rate (full / half / quarter / sub frame)*	ImageIR® 8300 Z: 200 / 570 / 1,000 / 4,700 Hz (14 bit), 200 / 670 / 1,200 / 5,000 Hz (13 bit) ImageIR® 9300 Z: 50 / 200 / 390 / 3,400 Hz
Window mode	Yes
Focus	Motor focus with absolute focussing
Focusing time	300 m up to : 0.5 s
Lens focal length	(28 ... 850) mm (30× optical zoom)
Zoom setting time	(100 ... 850) mm: 2 s
Field of view	ImageIR® 8300 Z: (19.8 × 15.9)° ... (0.6 × 0.5)° ImageIR® 9300 Z: (39.8 × 32.3)° ... (1.3 × 1.0)°
Minimum object distance	(3 ... 50) m
Max. detection range (vehicle / person)	18 / 15 km
Max. identification range (vehicle / person)	12 / 9.5 km
Dynamic range*	ImageIR® 8300 Z: 13 / 14 Bit ImageIR® 9300 Z: 14 Bit
Integration time	ImageIR® 8300 Z: (0.6 ... 20,000) μs ImageIR® 9300 Z: (0.5 ... 18,000) μs
Multi Integration Time*	Yes
Image synchronisation	Internal, IRIG-B, external
Interfaces	GigE-Vision compatible, RS232, USB 2.0
Trigger	SyncIN, 2 IN* / 2 OUT*, IRIG*
Tripod adapter	8 × M6
Power supply	24 V DC, wide-range power supply (100 ... 240) V AC
Storage and operation temperature	(-40 ... 70) °C, (-20 ... 50) °C
Protection degree	IP54, IP65*
Dimensions, weight	(360 × 240 × 270) mm, 17.5 kg

* Depending on model

The **ImageIR®** camera series is a high-precision measurement solution that has been an indispensable tool in **high-quality research, development and automation solutions** for many years. There is more beyond high-end infrared camera series ImageIR®: The combination of this thermal imaging system with a premium **30× zoom lens facilitates complex observation and investigation**, such as border control, vehicle observation and monitoring of the environment or animals. The detection range is outstanding: vehicles can be detected up to 18 km and persons up to 15 km.

The rugged and exact **power zoom** together with the high-performance 30× zoom lens achieves a **continuously adjustable field of view** from (39.8 × 32.3)° down to (1.3 × 1.0)° with a detector format of (1,280 × 1,024) IR pixels. Therefore, also objects being far away can be displayed with a high-resolution infrared image. The camera versions ImageIR® 8300 Z and ImageIR® 9300 Z with detector formats of (640 × 512) and (1,280 × 1,024) IR pixels are available. The customisable software interface offers **time coded real-time playback**.



Dresden town hall, lens focal length (28 ... 850) mm

Headquarters

InfraTec GmbH

Infrarotsensorik und Messtechnik

Gostritzer Str. 61 – 63

01217 Dresden / GERMANY

Phone +49 351 871-8630

Fax +49 351 871-8727

E-mail thermo@InfraTec.de

USA office



© InfraTec 01/2017 (All stated product names and trademarks remain in property of their respective owners.)

For further information, contact us: www.techimaging.com or 978-740-0063