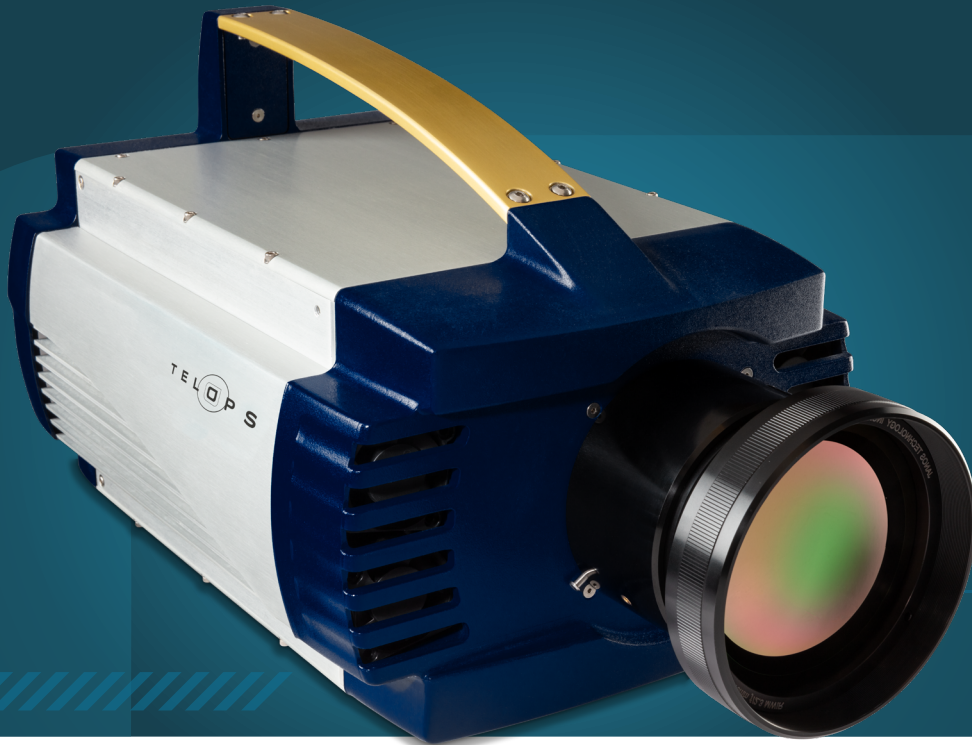


MS V1K



*HIGH-SPEED VGA-FORMAT SCIENTIFIC
MULTISPECTRAL THERMAL IMAGING*

KEY FEATURES



MULTISPECTRAL CAPABILITIES



HIGH DYNAMIC RANGE



ADVANCED CALIBRATION



HIGH SENSITIVITY

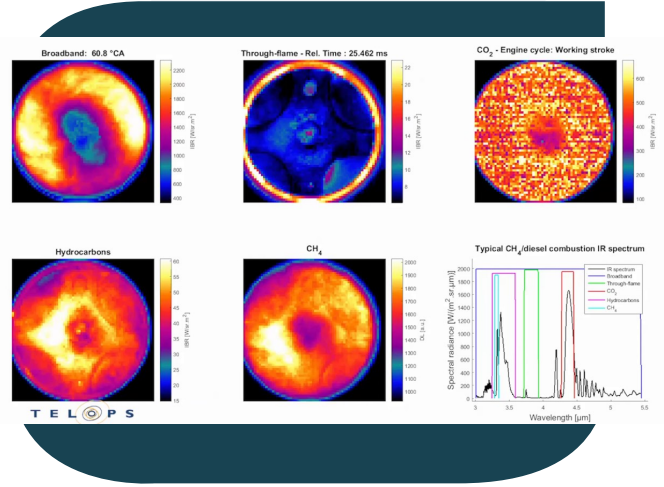
The MS-IR infrared camera allows the scene to be split into eight different spectral bands rather than only one broadband image, thus enabling spectral signature analysis. The filter wheel is a fast-rotating mechanism designed to maximize the cameras' frame rate. Rotating speed is adjustable up to 105 Hz per filter, allowing a frame rate up to 2 900 fps in a synchronised mode.



MS V1K



Multispectral image of burning wood crib



Multispectral Imaging of a Diesel Engine

SPECIFICATIONS

Detector Type	Cooled SLS
Detector Format	640 × 512 pixels
Spectral Range	7.5 μm to 11.5 μm
Detector Pitch	25 μm
Aperture Size	F/2.5
Maximum Frame Rate in Full Window (Static Filter Wheel Mode)	1,012 Hz
Maximum Frame Rate in Subwindow (Static Filter Wheel Mode)	40,000 Hz @ 64 × 8
Maximum Frame Rate in Rotating Filter Wheel Mode	800 Hz
Typical NETD	30 mK
Exposure Time	0.3 μs to full frame rate
Lens Mount	Threaded

TECHIMAGING

WWW.TECHIMAGING.COM

**REQUEST A DEMO
PRICING AND AVAILABILITY
imaging@techimaging.com**