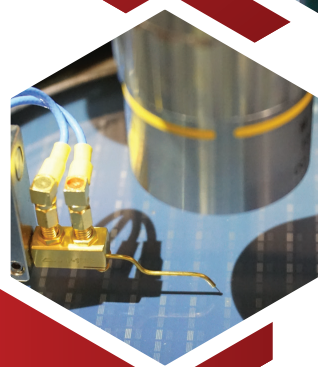




**WiDy**  
Sens

**It makes SenSe!**



# WiDy Sens 320 HS

**High Sensitivity & HDR SWIR camera**

Dual mode InGaAs sensor (Lin & Log)  
qVGA (320x256 px) & VGA (640x512 px)  
Short-wave Infrared Imaging from 900nm to 1700nm  
10-kHz (ROI) frame rate and 1- $\mu$ s exposure time



**niT**

NEW IMAGING TECHNOLOGIES  
PREMIUM SWIR BY LYNRED

[www.new-imaging-technologies.com](http://www.new-imaging-technologies.com)

# Technical Specifications



## WiDy Sens 320 HS

Sensor	NIT's NSC2001T-SI
Resolution	320 x 256 pixels - 15µm pixel pitch
Frame rate	1K Hz full frame Up to 10kHz (32x32)
Output	USB 3.0, CamLink, GigE
Gating mode	No
Dimensions	46 * 46 * 53/59.7 mm
Spectral response	0.9 to 1.7 µm
Sensor Material	InGaAs
Response	Linear (CTIA) Low & High Gain Logarithmic
Modes	IWR/ITR, CDS, ROI
QE	>70%
Sensor noise	50e-
Dynamic Range	120dB
Partial Reading Mode	down to 16x16
Operating Mode	TEC on/off
Integration Time	10µs to 1s
Cooling capacity	ΔT° = 30°C
Trigger (depends on models)	Software or hardware 1x Trigger IN/OUTPUT 2x Programmable outputs
Trigger delay	Adjustable
Weight	< 240 g
Lens mount	C-Mount native
Operating Temp	-40 °C to + 70 °C
GUIs	GUI (USB & Gige): Camera Control and Image Viewer GUI (Cameralink, Analog, HD-SDI): Camera Control only
SDKs (USB & GigE)	x86-64 & Arm64 (C++, C#, Python)

Products and specifications are subject to change without notice.

OEM version available on demand

Sensors  MADE IN  
Cameras FRANCE

by 

# TECHIMAGING

WiDy Sens-Flyer-V4.4

## WWW.TECHIMAGING.COM

REQUEST A DEMO  
PRICING AND AVAILABILITY  
[imaging@techimaging.com](mailto:imaging@techimaging.com)