

# PHARSIGHTED E9•150S



## KEY CAMERA FEATURES

### Backside-Illuminated CMOS Image Sensor:

- 640 x 480 pixels at 489,000fps (E9 • 150S)

### Maximum Frame Rate:

- 640 x 48 pixels at 2,720,000fps (E9 • 150S)

### Class Leading Light Sensitivity:

- ISO 12232 daylight
- ISO 160,000 monochrome
- ISO 40,000 color

### Global Electronic Shutter:

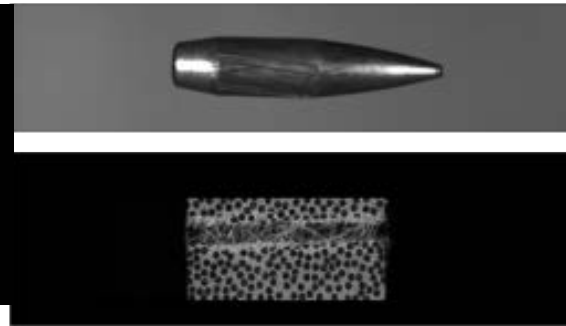
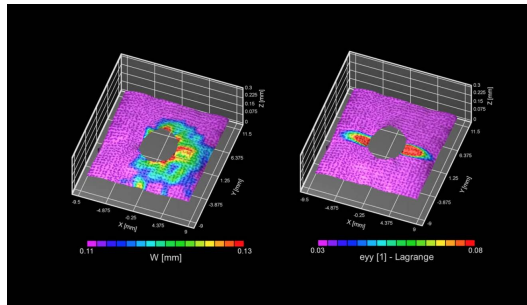
- 34ns minimum exposure time (E9 • 150S)

### Fast, In-Camera Storage:

- Removable U.2 NVMe SSD

### Internal Recording Memory:

- 162GB, 324GB, 648GB (E9 • 150S)



## SAMPLE FRAME RATE CHART

Resolution		E9•150S					
Width x Height	Max Frame Rate	162GB		324GB		648GB	
		Time (sec)	Frames	Time (sec)	Frames	Time (sec)	Frames
640 X 480	489,000	1.15	562,000	2.30	1,124,000	3.45	1,686,000
640 X 384	601,000	1.17	705,000	2.34	1,410,000	3.51	2,115,000
640 X 320	710,000	1.18	842,000	2.36	1,684,000	3.54	2,526,000
640 X 240	918,000	1.22	1,125,000	2.44	2,250,000	3.66	3,375,000
640 X 160	1,299,000	1.29	1,674,000	2.40	3,348,000	3.87	5,002,000
640 X 128	1,557,000	1.34	2,093,000	2.68	4,186,000	4.02	6,279,000
640 X 64	2,582,000	1.62	4,186,000	3.24	8,372,000	4.86	12,558,000
640 X 48	1,961,000	2.05	5,582,000	4.10	11,164,000	6.15	16,746,000
640 X 32	2,720,000	2.90	7,880,000	5.80	15,760,000	8.70	23,640,000
640 X 16	2,720,000	5.47	14,886,000	10.94	29,772,000	16.41	44,658,000

## Camera Performance Specifications

Model	E9-150S
Full Frame Performance	640 x 480 pixels at 489,000fps
Example Frame Rates	640 x 384 pixels at 601,000fps 640 x 240 pixels at 918,000fps 640 x 128 pixels at 1,557,000fps
Minimum Exposure Time	Global electronic shutter to 34ns selectable independent of frame rate
Straddle Time	350ns
Memory Capacity	162GB, 324GB, or 648GB
Dynamic Range (ADC)	9-bit
Memory Partitions	Up to 1024 memory segments
Sensor Size / Pixel Size	33.28 x 24.96mm / 52µm
Camera Control Interface	1 / 2.5 / 5 / 10G Ethernet
Video Output	HD-SDI signal
Video Conversion	Conversion of .SLOW to common video and image formats such as MP4, .AVI & .TIFF
Operating System Compatibility	Windows, MAC OS, and Linux

### Fast 10-Gigabit Ethernet Interface:

- Provides camera control and high-speed image download to standard PC or MAC and Linux systems.
- Supports IEEE 1588 (PTPv2) time code.
- Rugged IP68 RJ45 connector.

### Camera Size:

- 240mm (H) x 212mm (W) x 175mm (D)
- 9.45" (H) x 8.35" (W) x 6.89" (D)
- Weight: 10.88kg (24 lbs)

### Flexible I/O:

- Six 5V TTL, I/O BNCs, each settable as a Output, Input, or Open Drain Bi-Directional.
- Signal polarity, pulse delay, & pulse width are all configurable.
- Signals such as Trigger, Frame Sync, Ready, Shutter, and Event are available.
- Dedicated trigger, SDI, and analog BNCs.

### NVMe SSD:

- U.2 NVMe drives provide for fast, long-term, and cost-effective storage that is readily available.
- Write speeds allow for either immediate backup of the image buffer or significant capture rates directly to the SSD.
- The .SLOW files stored on a drive can be viewed in a standard OS environment.
- Every E9 includes a ~1.6TB drive, drive tray, and USB-C dock.

### SLOW Software

- Clean, intuitive control and monitoring of live cameras.
- Playback from the image buffer, on-board SSD, or local .SLOW files.
- Windows, MAC OS, and Linux Compatible.
- The .SLOW format contains both RAW image data and metadata.
- Conversion of .SLOW to common video and image formats such as MP4, .AVI and .TIFF.

## Mechanical and Environmental Specifications

Mechanical	
Lens Mount	Nikon F / G type compatible, Canon EF, 1" C mount
Internal Filter	58mm threaded
Minimum Flange Distance	8.0mm
Mechanical Shutter	Internal, rugged
Camera Body (excluding protrusions)	240mm (H) x 212mm (W) x 175mm (D) 9.45" (H) x 8.35" (W) x 6.89" (D)
Camera Body	10.88kg (24 lbs)
Mounting	3/8-16, top, bottom, left side
Power	Primary and backup 24-28VDC 200W, SSD up to +30W Input: 100-240VAC, 50/60Hz Output: 24VDC, 280W
Environmental	
Operating Temperature	0 to 40C, 32° to 104°F



**TECHIMAGING** REQUEST A DEMO  
PRICING AND AVAILABILITY  
imaging@techimaging.com  
**WWW.TECHIMAGING.COM**